



QRTG

User Manual

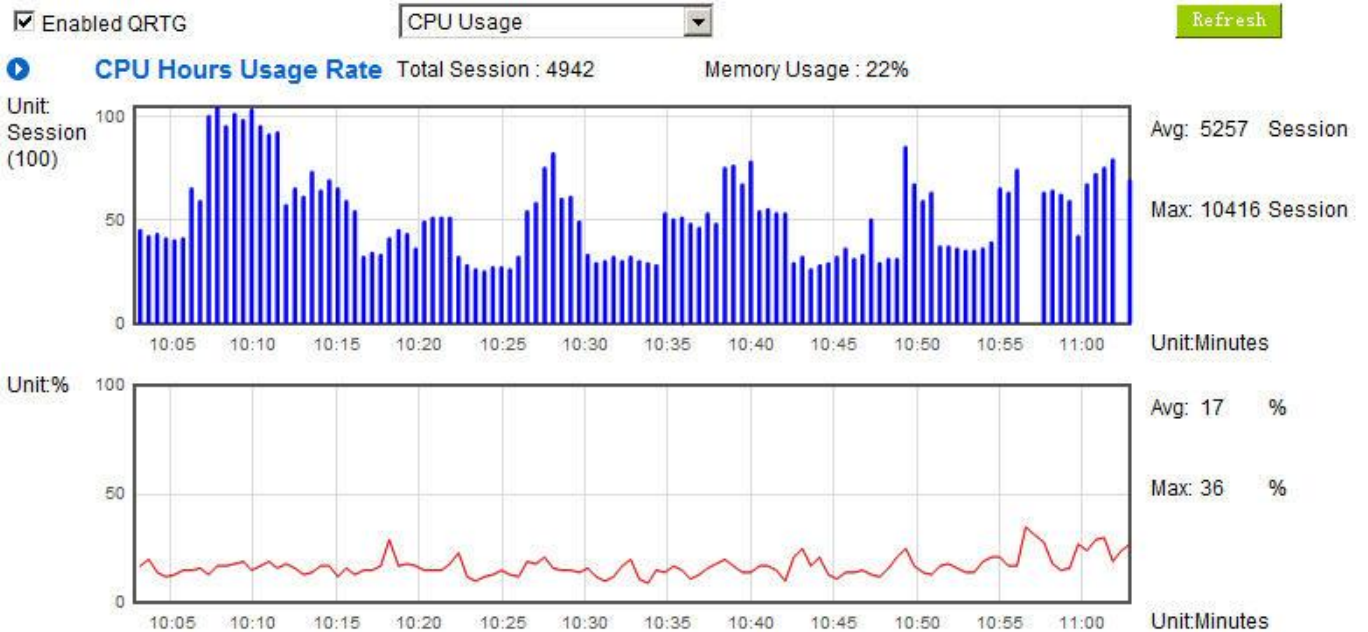
QRTG (Qno Router Traffic Grapher)

QRTG utilizes dynamic GUI and simple statistic to display system status of Qno Firewall/ Router presently, including CPU Utilization(%), Memory Utilization(%), Session and WAN Traffic.

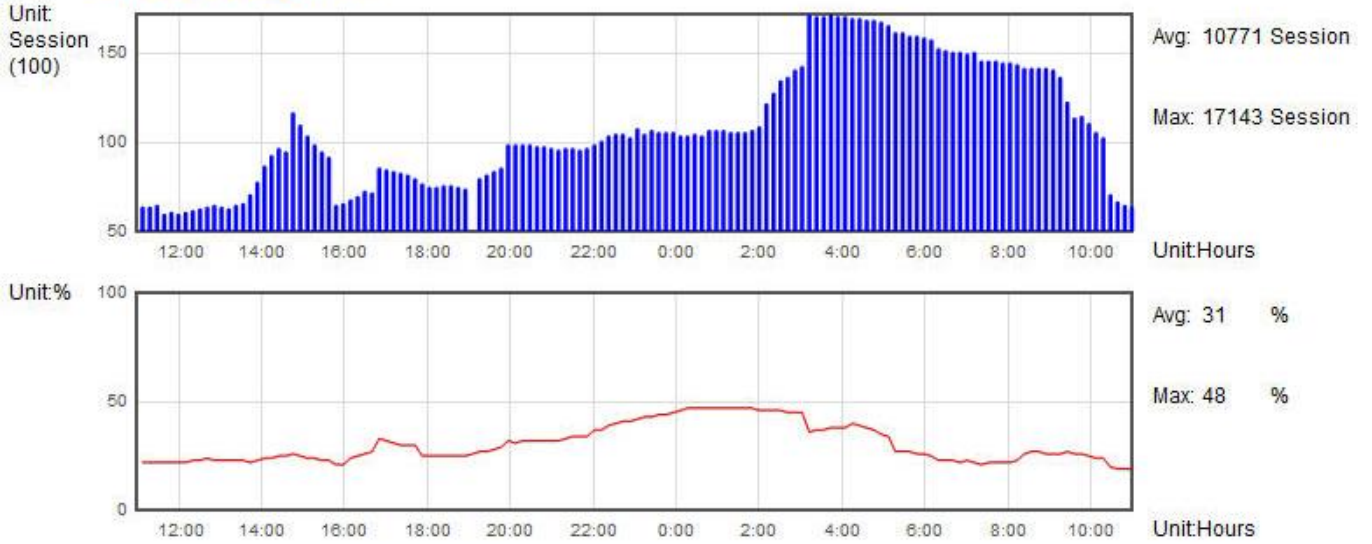
Enable QRTG: The function is disabled by default. When you are going to enable the QRTG function, system will pop-up a warning message to remind you this function will be enabled, which may influence router efficiency. You can use drop down menu to select current status that including statistic and graphics of the following items when this function is enabled. System will refresh the statistic and graphics to latest data timing when you click “Refresh” button.

I. CPU Usage (As in the the following figure)

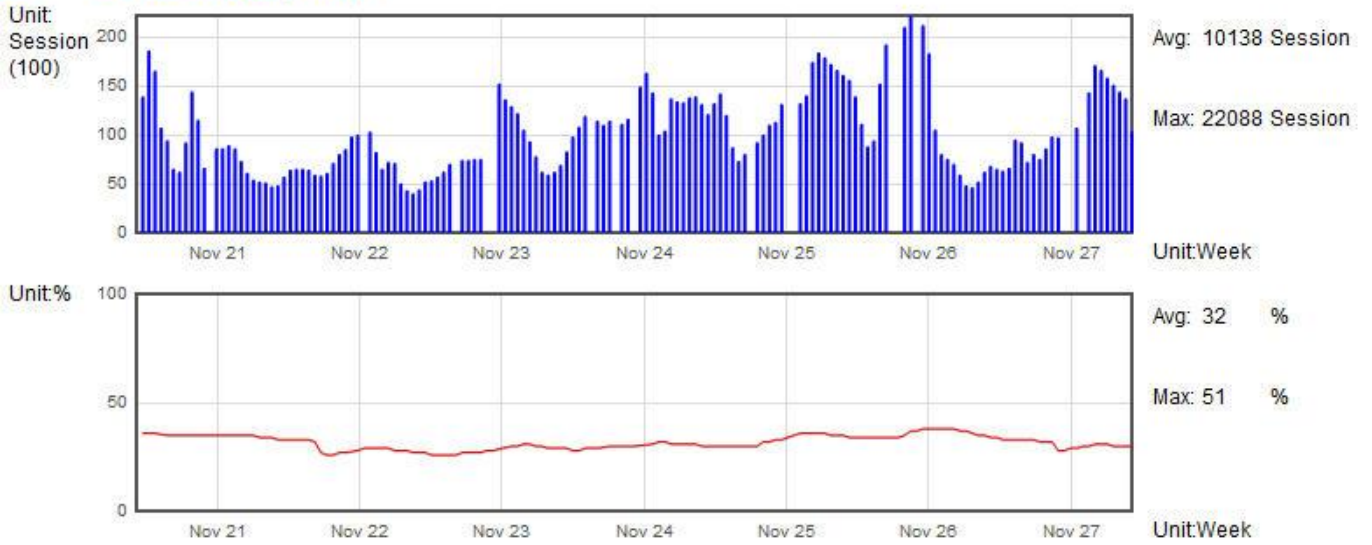
- (1) CPU Hours Usage Rate graphic / average/ maximum
- (2) CPU Days Usage Rate graphic / average/ maximum
- (3) CPU, Week Usage Rate graphic / average/ maximum



CPU Days Usage Rate



CPU Week Usage Rate



II. WAN Traffic Statistic (hourly) graphic and average (up/down stream) (As in the following figures)

Enabled QRTG

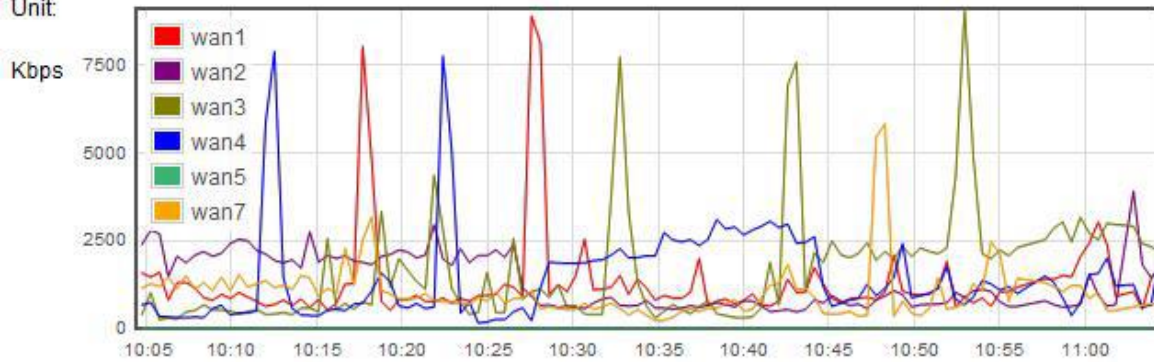
WAN Traffic Statistics(Hour) ▾

Refresh

WAN Downstream wan1 wan2 wan3 wan4 wan5 wan6 wan7 wan8

Average:

Unit:



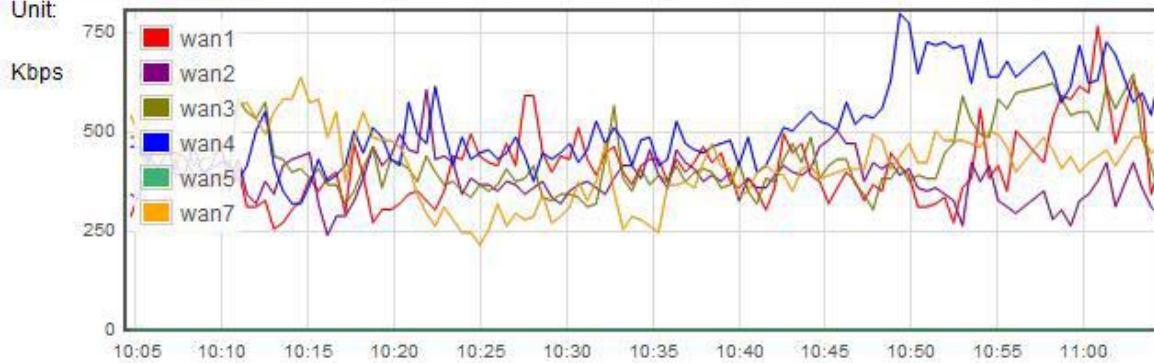
■	1328	Kbps
■	1338	Kbps
■	1690	Kbps
■	1487	Kbps
■	0	Kbps
■	1041	Kbps

Unit:Minutes

WAN Upstream wan1 wan2 wan3 wan4 wan5 wan6 wan7 wan8

Average:

Unit:

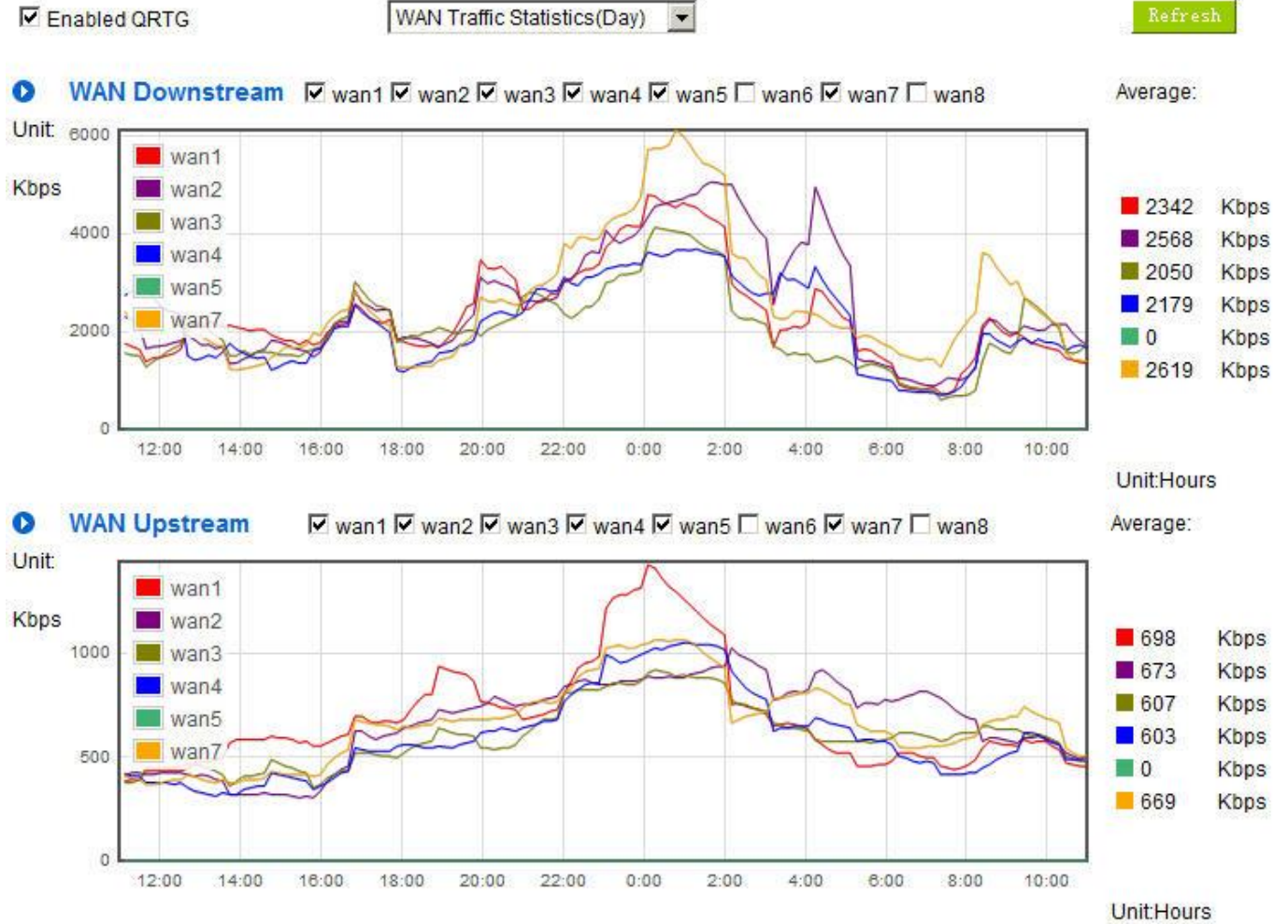


■	411	Kbps
■	388	Kbps
■	431	Kbps
■	516	Kbps
■	0	Kbps
■	434	Kbps

Unit:Minutes

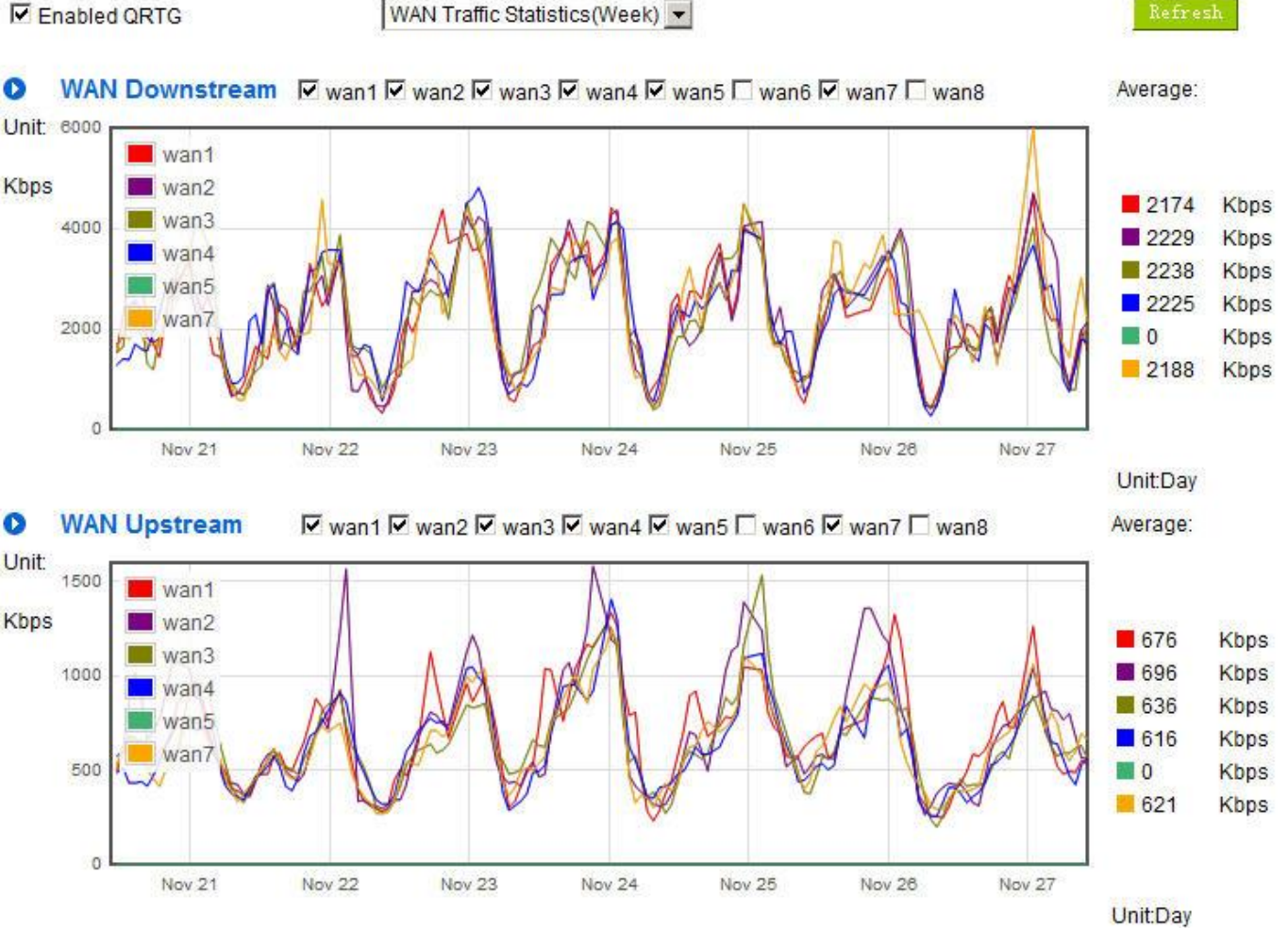
* The UI might vary from model to model, depending on different product lines.

III. WAN Traffic Statistic (Day) graphic and average (up/down stream)(As in the following figures)



* The UI might vary from model to model, depending on different product lines.

IV. WAN Traffic Statistic (Week) graphic and average (up/down stream)(As in the following figures)



* The UI might vary from model to model, depending on different product lines.