

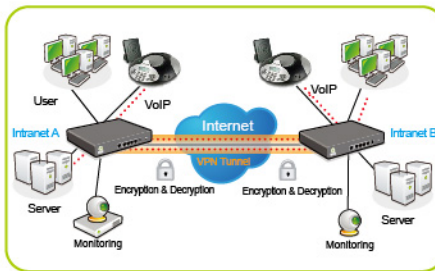
## QVF7302



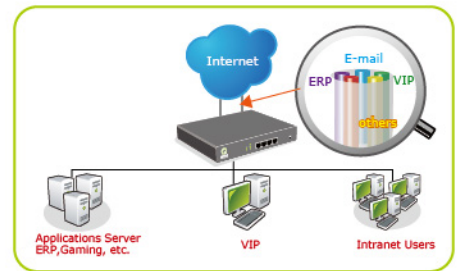
### Dual-WAN QoS VPN Firewall Router An Ideal Dual-WAN Router for SMB office

QVF7302 is a QoS VPN Firewall Router for Small Business & Internet Cafe. It can realize bandwidth aggregation by connecting to additional ADSL or fiber optical line as containing 2-WAN design. In the meantime, 2-WAN delivers the functionality of Load Balancing that is, according to sessions or IP addresses, each line gets the average utilization at the same time, realizing an optimization of bandwidth usage. Also, with the support of hardware NAT acceleration, users could visit the internet more quickly even when there are around 50 PCs in LAN.

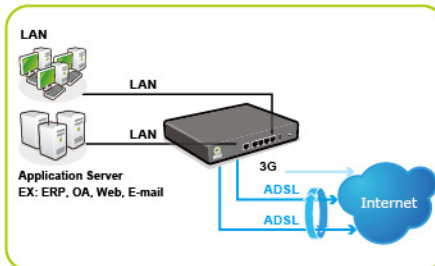
Besides, QVF7302 is a highly integrated device with 3G wireless Internet, powerful firewall and management system. It also supports multiple VPN protocols such as IPSec/PPTP/SmartLink, which helps users establishing VPN more flexibly. This Router's easy-to-use GUI management interface allows you to manage the whole network without the requirement of deep network knowledge. You can easily control the utilization of valuable network resources.



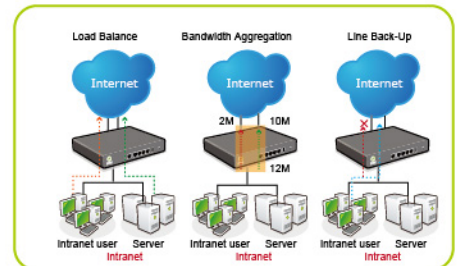
• IPSec VPN



• QoS Bandwidth Management

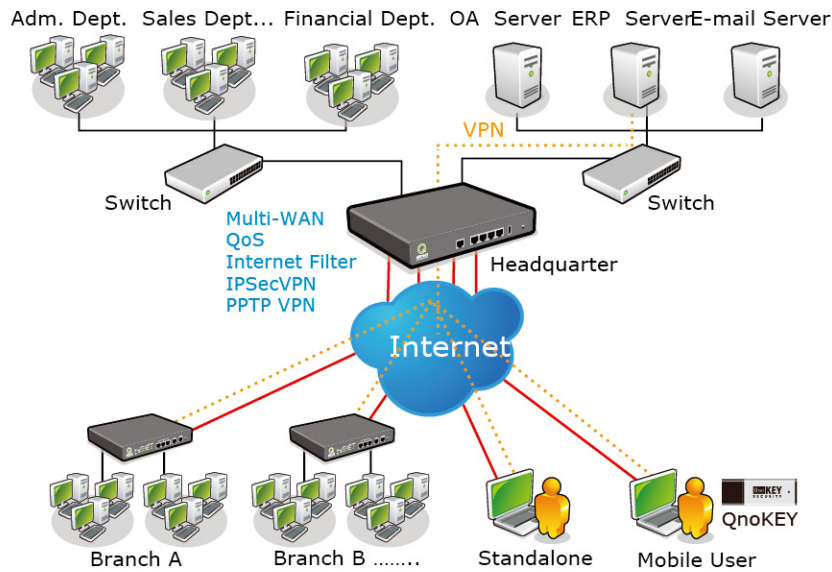


• 3G Router



• Multi-Wan Ports

## QVF7302 can be implemented in SMB office



Model Name	QVF7302
Network Processor	MIPS64 Processor
Flash/DRAM	32MB/128MB
WAN/LAN/DMZ port	1~2/3~4/1
USB Port	1
Session	30,000
NAT Throughput	100Mbps
VPN Throughput(3DES)	76Mbps
Load Balance	Session/ Advanced Session/ IP
NAT Plus Router Mode	-
The number of assignable IP	2 Class C
Smart QoS	•
SPI/DoS Detect	•
VPN Tunnel	Max 20
QVM SmartLink VPN Client	•
QnoKey Server	•
QnoSoftKey Server	•
PPTP VPN Server	Max 10 Clients
One-to-One NAT/DMZ/Virtual Server	•
Port VLAN	•
Mirror Port	-
Local IP Group	•
Service Port Group	-
Bi-direction ARP Binding	-
E-Bulletin	-
QnoDDNS / DynDNS	•
HA (High Availability)	-
PPPoE Server	-
3G/3.5G Backup Mode	•
QRTG Graphic Statistics	•
Support QnoSniff	-
Recommended PC Number	30~50
Size	240x160x44mm